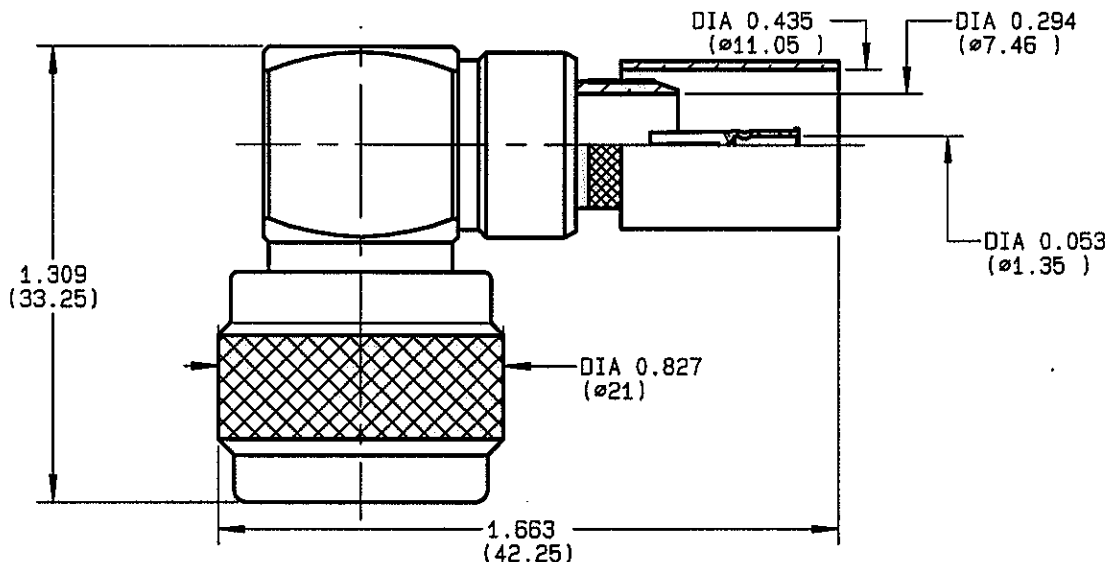


**RIGHT ANGLE PLUG FULL CRIMP-TYPE
CABLE 10/75 S**

R162.185.000
SERIES N 75



| | |
|---------------------------------|----------------------------------|
| NOMINAL IMPEDANCE | 75 Ω |
| FREQUENCY RANGE | 0-1.5 GHz |
| TEMPERATURE RATING | -55/+155 °C |
| V.S.W.R | 1.70 + x F(GHz)Maxi |
| RF INSERTION LOSS | .10 √F(GHz) dB Maxi |
| VOLTAGE RATING | 1400 Veff Maxi |
| DIELECTRIC WITHSTANDING VOLTAGE | 2500 Veff Mini |
| INSULATION RESISTANCE | 5000 MΩMini |
| HERMETIC SEAL | NA Atm.cm ³ /s |
| LEAKAGE (pressurized only) | NA |
| MECHANICAL DURABILITY | 500 Cycles |
| WEIGHT | 44 gr |
| SPECIFICATION | |

CABLES : **KX 8**
RG 11
RG 144

OTHERS CHARACTERISTICS

| | |
|----------------------------|---------------------|
| CABLE RETENTION | 300 N Mini |
| CENTER CONTACT RETENTION | |
| Axial force - mating end | 68 N Mini |
| Axial force - opposite end | 68 N Mini |
| Torque | NA cm.N Mini |
| RECOMMENDED TORQUES | |
| Mating | 130 cm.N |
| Panel nut | NA cm.N |
| Clamp nut | NA cm.N |

| CONNECTOR PARTS | MATERIALS | FINISH | (all values are given) in micrometers |
|-----------------|-----------------|------------------------|-------------------------------------------|
| BODY | BRASS | BBR 2 | |
| OUTER CONTACT | BRASS | BBR 2 | |
| CENTER CONTACT | BRASS | GOLD 0.5 OVER NICKEL 2 | |
| INSULATOR | PTFE | - | |
| GASKET | SILICONE RUBBER | - | |
| OTHERS PIECES | BRASS | BBR 2 | |

GAUTIEF. ISSUE 9808C01 CREATION DATE 25-OCT-94 FILE PART-NUMBER EPC 96-07



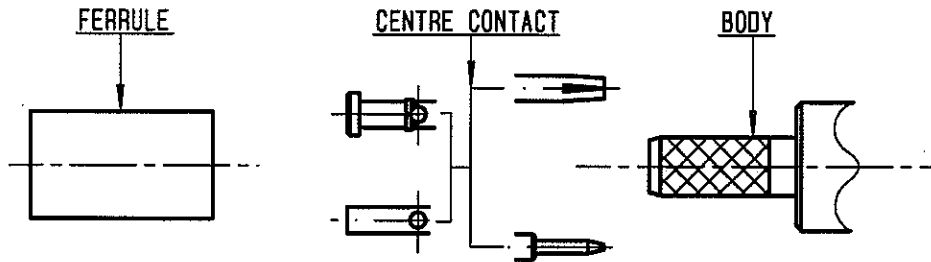


RADIALL®

R162.185.000

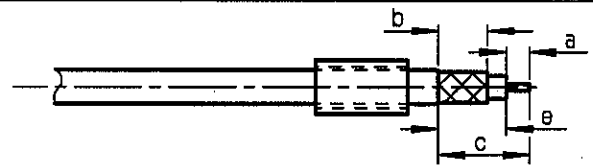
ISSUE 9808C01

SERIES N 75



①

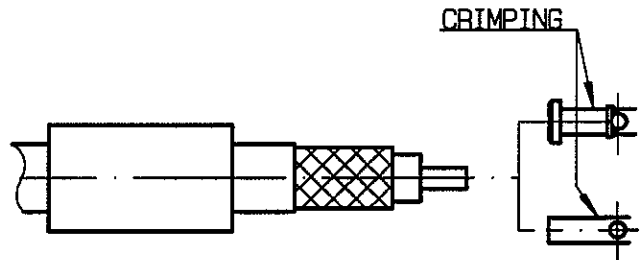
Slide onto the cable the ferrule
Strip the cable .



| Stripping | a | b | c | d | e |
|-----------|-------|-------|-------|---|-------|
| inch | 0.177 | 0.315 | 0.591 | 0 | 0.413 |
| mm | 4.5 | 8 | 15 | | 10.5 |

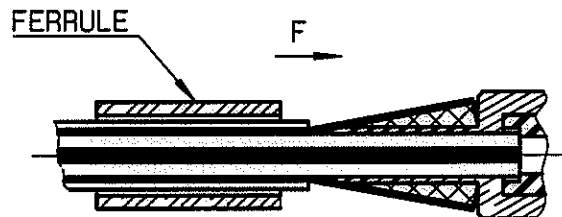
②

Slide on centre contact until it bottoms against cable dielectrique .
Crimp centre contact .
Crimping tool : R282 223 000 (Hex. : 0.068)
or R282 293 000 (M22520/5-01)
+ dies R282 235 011 (M22520/5-11) .



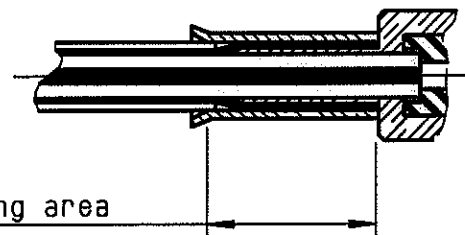
③

Fan the braid .
Slide cable into the body until bottoms against insulator .
Slide ferrule over the braid .
(In direction F)



④

Crimp the ferrule with crimping tool R 282 231 000 (Hex. : 0.415) or crimping tool R282 293 000 (M22520/5-01)
+ dies R282 235 116 (Y 116 DANIELS)
Cut the excess of braid .



Crimping area